



ALTEC SD_TRAFIX-H

Trapezoidal roof systems für horizontally mounting Product Sheet

10 year warranty
calculated on complete systems



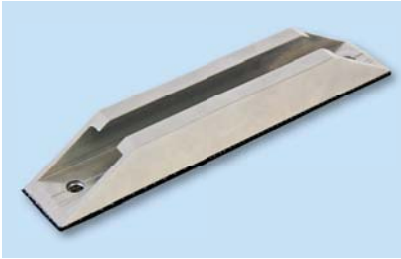
- **quick** installation
- **minimum** of components
- **low handling** and storage costs
- simple and **fast** logistics
- suitable for trapezoidal roof sheets with metal thickness between **0.63 and 1.5 mm**

Description

This attachment consists of only four parts: a tailored piece C-bracket (drilled and covered with EPDM band), a middle or end clamp and two fastening screws. The use of thin sheet metal screws means no pre-drilling is normally required and because the sheet material is displaced virtually no swarf is generated thus minimizing the risk of corrosion spots. For sandwich panel roofs it is recom-

mended to confirm the suitability of this fastening method with the sheet manufacturer. All framed PV modules with a height of 35 to 50 mm can be clamped with this system and are laid in landscape format. By using the ALTEC module clamps with variable clamping heights and the elimination of long mounting rails, this set is flexible and allows a cost effective, simple and fast solution for both installation and logistics.





C-rail bracket with EPDM tape



C-rail bracket with center clamp



C-rail bracket with end clamp



Thin sheet metal screw

The short sections of C-rail which form the base bracket have a pre-applied EPDM-strip and are screwed directly onto the sheet crown, thus result in an extremely fast installation time. For the cable guide we recommend using edge clips that are fastened to the underside of the module. In the end clamp set an anti-slip clip is included.

Complete sets

- ① ALTEC SD_TRAFIX-H mid clamp set *_1TCBMKSET000*
cut, perforated and covered with EPDM tape
+ Module mid clamp with snap fit block (module height 35–50 mm)
+ 2no thin sheet metal screws
- ② ALTEC SD_TRAFIX-H end clamp set *_1TCBEKSET000*
cut, perforated and covered with EPDM tape
+ Module end clamp with snap fit block (module height 35–50 mm)
+ 2no thin sheet metal screws

Components

- ① ALTEC SD_TRAFIX-H *_3TCB28220164*
cut (length 164 mm), drilled (7 mm Ø)
and with EPDM tape (30 × 3) glued
- ② Thin sheet metal screws 6.0 × 25 *_4BSRP0206025*
- ③ Middle and end clamps or
clamping plates and clamping angle *_see ALTEC product catalogue*

The ALTEC SD_TRAFIX-H is suitable on buildings with following wind and snow loads:

Wind load: zone 2, h < 18 m (inland)
zone 2, h < 10 m (coast)
zone 3, h < 10 m (inland)

Snow load: zone 2, to h < 285 m above sea level
and North German lowlands
zone 2, to h < 420 m above sea level
zone 2a, to h < 285 m above sea level

For other wind and snow areas, please ask our team. The roof must be able to bear the additional loads resulting from the PV installation.